

STANDARD NOGM® FEATURES

EXTERIOR

- Historically inspired architectural designs
- Fiber cement siding
- Low-E, argon-filled ENERGY STAR® rated windows
- ENERGY STAR rated insulated entry doors
- Pressure treated decking
- Architectural shingle roof, 30-year warranty

INTERIOR FINISHES

- Wide-plank, strand woven bamboo flooring (5")
- 9' first floor ceilings
- Open & efficient floorplans
- 3"X6" designer bathroom wall tile
- 6"X6" complimentary bathroom floor tile
- Mohawk® EverStrand® recycled carpet
- Colonial trim packages

KITCHEN

- Stainless steel, ENERGY STAR rated appliances
- Non-added urea formaldehyde designer laminate countertops
- Tastefully crafted platinum hardwood cabinets w/ multiple finish options

WATER SAVING TECHNOLOGIES

- Low-flow Kohler® showerheads & faucets
- Dual flush toilets
- Central manifold, home-run plumbing

CONSTRUCTION HIGHLIGHTS

- R-19 formaldehyde-free wall insulation
- Foam insulated band joists & sill plates for decreased air infiltration
- Advanced framing techniques w/ increased R-Value & reduced thermal bridging
- Superior Wall panelized, pre-insulated foundation walls
- Insulated foundation slab

MECHANICAL EQUIPMENT

- Tankless hot water heater (sealed combustion)
- High efficiency HVAC equipment (14 SEER minimum, 90% AFUE w/ MERV 13 filtration)
- Programmable thermostat w/ moisture control
- ENVI whole house energy monitor

AVAILABLE OPTIONS

- Zero-VOC Benjamin Moore® paint
- Engineered quartz countertop
- Upgraded appliances
- Upgraded trim options
- Upgraded cabinetry and kitchen designs
- Sealed combustion, direct vent fireplaces w/ electronic ignition
- Permeable pavers
- Foot controlled kitchen faucet
- Rainwater harvesting system
- Metal roofing
- Thermally modified wood decking
- Andersen windows
- Additional features available

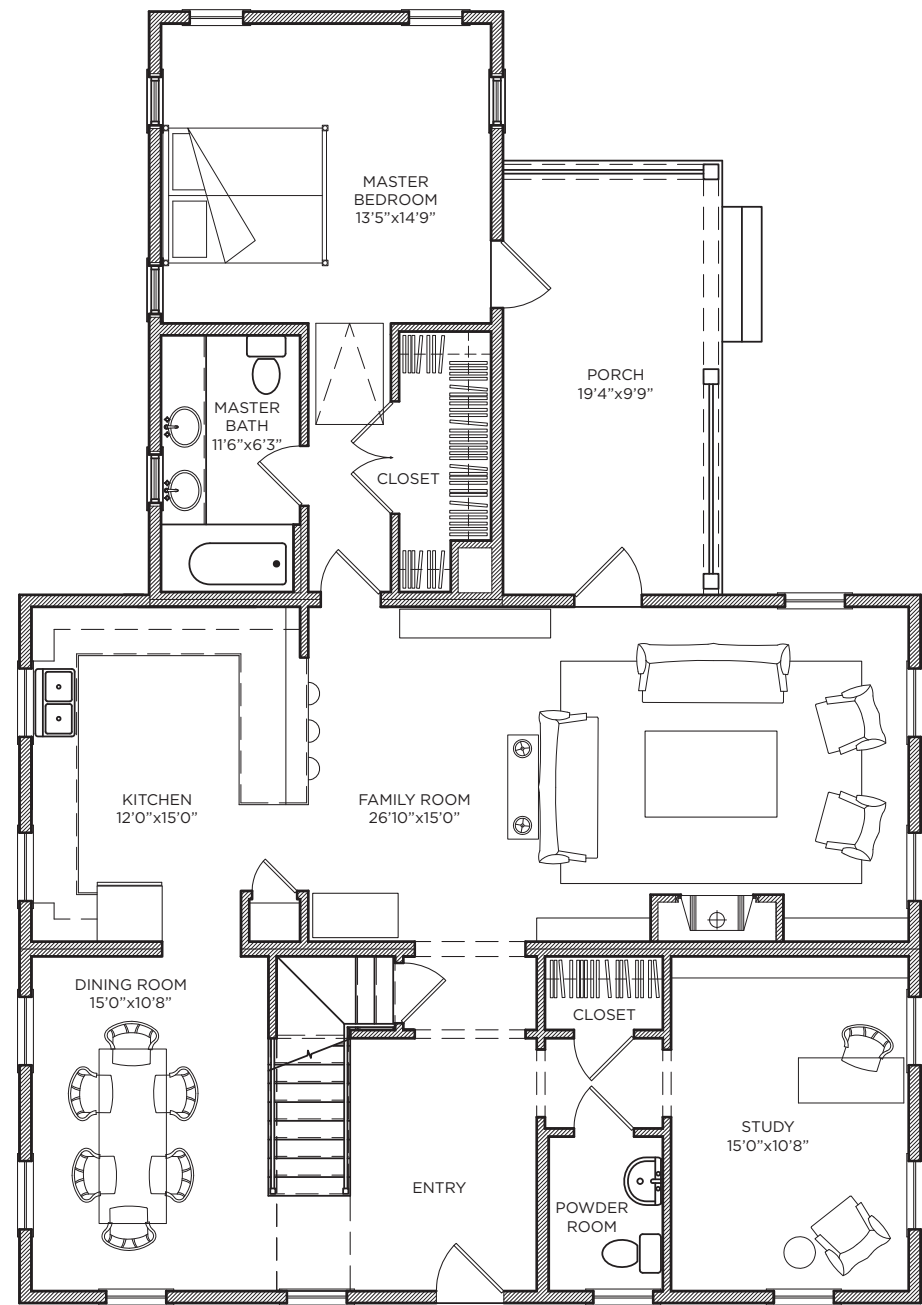
NEW JERSEY 101 Hudson Street | 35th Floor | Jersey City, NJ 07302
www.newworldhome.com | 800-841-5042



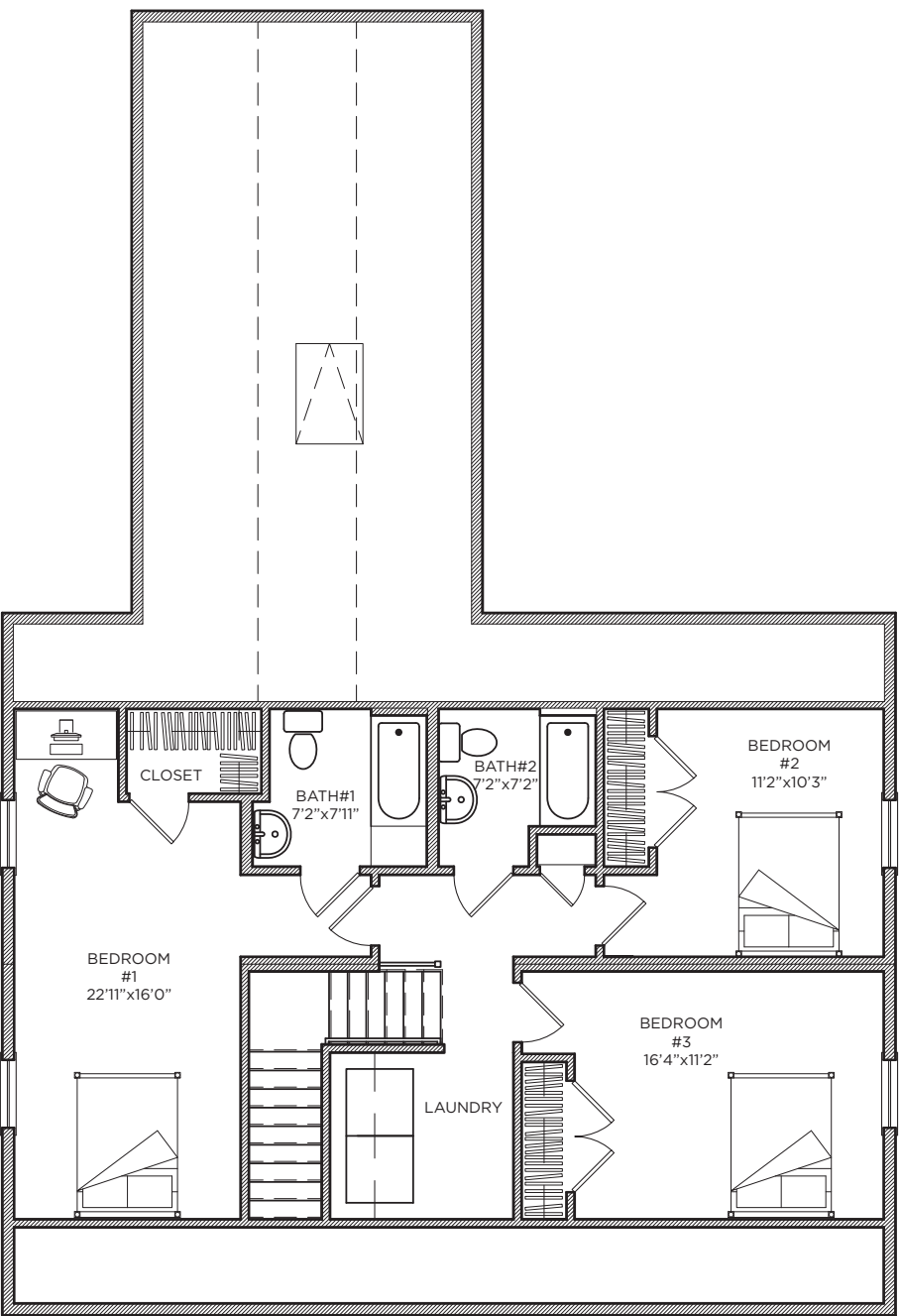
MUIR



FIRST FLOOR



SECOND FLOOR



BEDROOMS 2
BATHROOMS 2 1/2
FLOORS 2

WIDTH 40' 1"
DEPTH 57' 5"
FIRST FLOOR 1671 sq ft

SECOND FLOOR 902 sq ft
TOTAL 2573 sq ft
PORCHES 188 sq ft

SIDING OPTIONS*



*Colors not available in all markets.



©2010 New World Home LLC. All rights reserved. All plans and elevations are artist renderings and may contain options that are not standard on all models. All dimensions are approximate and subject to change without notice. All plans, elevations, sketches, renderings, graphic materials, specifications, terms, conditions and statements contained herein are proposed only and subject to change without prior notice.