

# HOME TOUR CARSON WITH ADDITION





# *Historical green convergence*

There are two primary differences between a New Old Green Modular (NOGM®) home and a conventional modular home. First, a NOGM home is based on a historically inspired design that evokes the spirit of the past while integrating all of the modern conveniences and amenities of the 21<sup>st</sup> century. Second, a NOGM home utilizes a whole-systems approach to design, incorporating the most stringent green standards, products and practices in the building industry. As a result, a NOGM home approaches *USGBC LEED for Home Platinum* certification directly out of the factory.























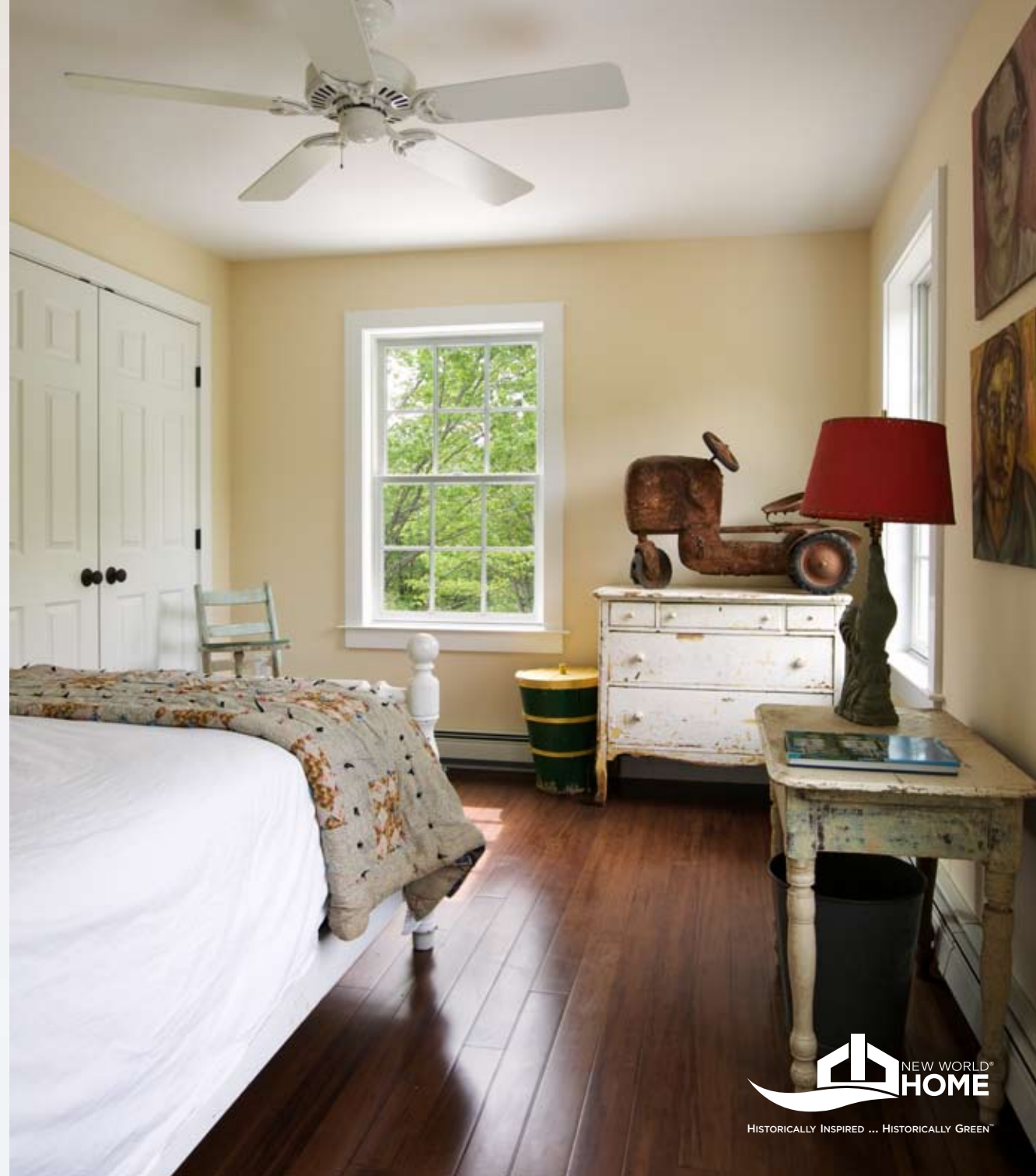




























*Welcome home.*



# *Personal green legacy*

Buying a new home remains one of the single most important decisions a family can make. The opportunity to pursue an investment today for present and future generations should be one of our most gratifying actions. A New Old Green Modular home is an effective way to begin creating your personal green legacy.



**HISTORICALLY INSPIRED ... HISTORICALLY GREEN™**

[www.newworldhome.com](http://www.newworldhome.com) | [info@newworldhome.com](mailto:info@newworldhome.com) | 800-841-5042

New York  
28 West 44<sup>th</sup> Street  
Suite 1506  
New York, NY 10036

Atlanta  
1805 Old Alabama Road  
Suite 200  
Roswell, GA 30076



NAHB NATIONAL  
GREEN BUILDING  
PROGRAM™

Printed on totally chlorine-free, 100% post-consumer recycled paper.

©2009 New World Home LLC. All rights reserved. NEW WORLD HOME, NEW OLD GREEN MODULAR, NOGM, Historically Inspired ... Historically Green and their associated logos are service marks and trademarks of New World Home LLC. All plans and specifications are subject to change without notice.

